

Washer - Extractor Variofex 50 T

Standard equipment:

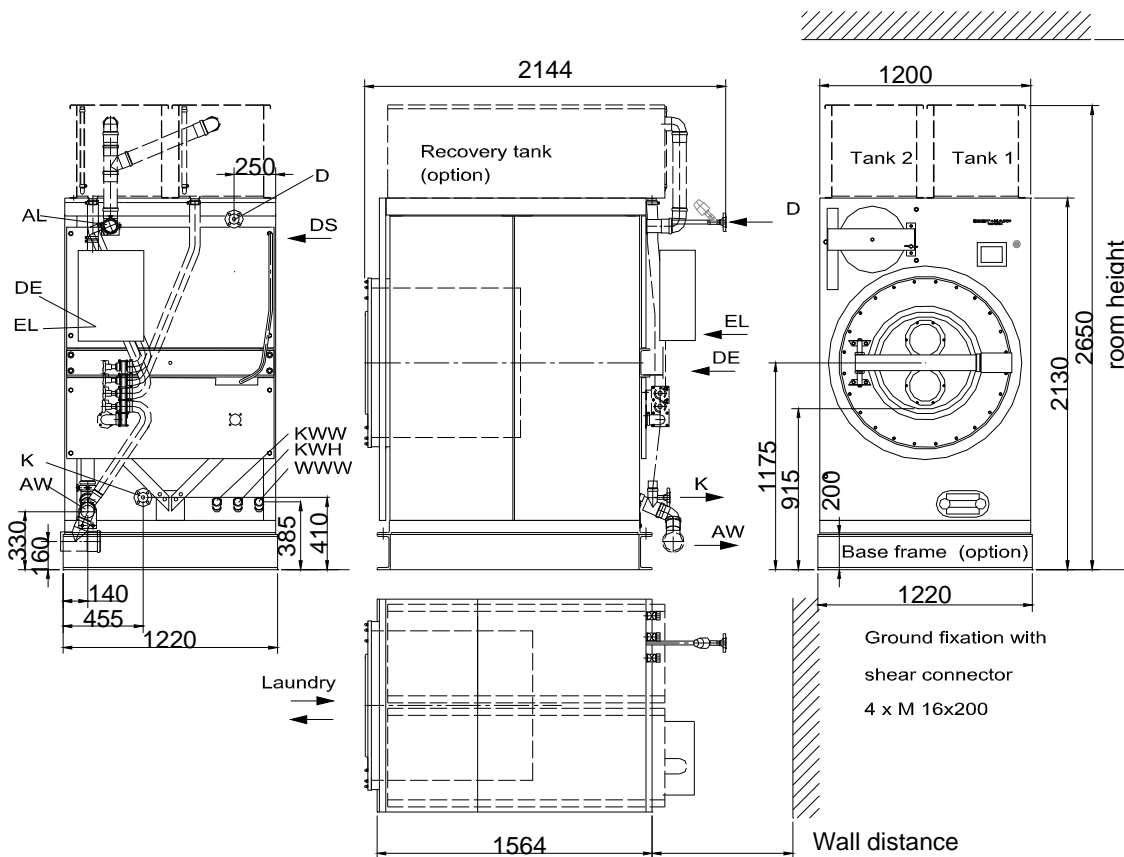
- Steam heating, direct, 3 – 13 bar with air-operated steam valve
- Frequency-controlled drive with infinitely variable drum speed for wash and extraction
- Electronic control with touch screen
- 4 removable flush-in hoppers for liquid and powdery detergents
- 1 connection point and up to 8 control facilities for dosing pumps
- Integrated water recovery tank
- Waste water pump with filter for foreign objects
- Water connections for 1 kind of water
- Colour: S+K - blue
- Operational data collection with interface to external data processing system



Optional Equipments:

- Steam heating, indirect, 3 – 13 bar with air-operated steam valve
- Oil circulating heating, with air-operated valve
- electric heating 48 kW
- Water connections for 2,3 kinds of water
- Base frame of rolled sections, 20 cm high
- Tilting device
- 4 additional connection points for dosing pumps
- Liquor re-circulation system
- Water recovery tanks on the top or connection to an external water recovery system
- PNEUMA-LOAD-System for automatic loading and barrier separation
- Software for programming of washing programmes at customers PC
- Other options on request

Loading capacity: (dry linen)	42 [kg]	46 [kg]	50 [kg]
Filling ratio	1:12	1:11	1:10
Drum cylinder	Diameter 850 [mm]	Depth 884 [mm]	Volume 500 [l]
Rotating speed	Washing 18 – 36 [U/min]	Spinning 290 – 970 [U/min]	g-factor spinning 40 – 450
Connected loads (The connected loads will be used shortly. The consumptions are much lower and are depending on wash-programmes)			
Electric Drive motor 5,8 [kW]	Fuse Drive motor 3 x 25 [A]	Electric heating 48 [kW]	Fuse Electric heating 3 x 80 [A]
Steam heating 3 -13 bar 200 [kg steam / h]	Water intake for any kind [180 l/min] *1	Waste water max. 95 °C 325 [l/min]	Compressed air 5-7 bar 10 [l/min]
Emission	Noise at washing 50 [db(A)]	Noise at max. spinning speed < 70 [db(A)]	Heat rate 3,4 [kW] ²
Weights:	Weight of the empty machine 1500 [kg]	Max. weight with filled tank 2350 kg	Weight of the sea crate 260 [kg]



If “Cold Water Hard” and / or “Hot Water Soft” are not available, please connect to “Cold Water Soft”.

EL	Electric connection, 3x400V / 50Hz	KWW (CWS)	Cold water soft, female thread G 1 1/4 “
D	Steam, flange DIN 2633, DN20 with oil circulation heating runback (option)	KWH (CWH)	Cold water hard, female thread G 1 1/4 “
K	Condensate connection (indirect heating) flange DIN 2633, DN 20 (option) with oil circulation heating run forward(option)	WWW (HWS)	Hot water soft (60°C-70°C), female thread G 1 1/4 “ ,
AW	Waste water , HT-pipe DN 70	DS	Detergent connection, 1x diameter 16 mm 4x diameter 10 mm (Option)
DL	Compressed air, DN 8	DE	Electric connection for detergent device 24 V DC for switching relay at site

Entrance dimensions: Width 1250 [mm] Height 2070 [mm]

Wall distance: minimum 800 mm,
 PNEUMA-LOAD Ø250: 1000 mm
 Recommended front space: 1800 mm
 Side spacement: not necessary

Room height: minimum 2700 mm,
 Recovery tank on the top 2800 mm
 PNEUMA-LOAD Ø250: 2750 mm
 PNEUMA-LOAD Ø400: 3000 mm
 (incl. base frame)

*1 The minimum floating pressure for all kinds of water is 2.5 bar. Recommended water hardness: 2-6°dH.

*2 Average heat rate at a standard washing programme 60/90°C.

Subject to alterations